

SIMPLICITY THAT LEADS YOU TO PERFECTION

MAXIMUM WORKABILITY,
EXCELLENT RESULTS,
MINIMUM EFFORT.

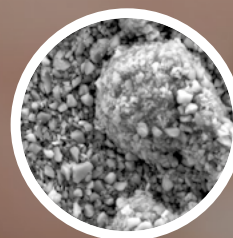
ESTELITE ASTERIA

A single gesture for perfection

With Estelite Asteria, achieving direct and indirect restorations with impeccable aesthetics has never been easier. Thanks to its advanced technology, this composite allows intuitive and simplified layering, reducing working times without compromising quality. **Maximum workability, excellent results, minimum effort.** Because perfection comes from simplicity.



ESTELITE ASTERIA
20.000X



CERAM.X SPHERETEC ONE
UNIVERSAL* 5,000X

Available packaging

Estelite Asteria Essential Kit



7 Estelite Asteria 4.0g syringes (colors: A1B, A2B, A3B, A3.5B, A4B, NE, OcE) + Clinical Guide

Spare parts:

- 1 Estelite Asteria syringe, 4.0g
- 15 capsules (PLT), 0.20 g each
- Estelite Asteria Custom Shade Guide

Colors:

- Body Enamel:
A1B, A2B, A3B, A3.5B, A4B, B3B, BL
- Colored Enamel:
NE, WE, YE, TE, OcE

The color guide allows you to create and customize the sample for color taking according to your specific preferences and needs. Customize the color guide and create the exact composite shades as you like.

ESTELITE ASTERIA

SIMPLY AESTHETIC

Create restorations with a simple, repeatable and predictable technique with superior aesthetic qualities.

ANTERIOR AND POSTERIOR
RESTORATIONS

COMPOSITE VEENERS

CLOSURE OF DIASTEMAS



Estelite Asteria. Leader of a winning team.

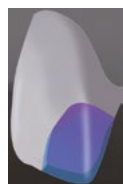
Who said "Never change a winning team"? If fundamentals are strong, a team is ready to welcome and propose great changes. Tokuyama Dental's conservative line is a winning team, with a great captain: Estelite Asteria. For this reason, choosing Tokuyama means living and sharing every day great successes. This is our philosophy. Tokuyama Dental: team that wins, evolves.



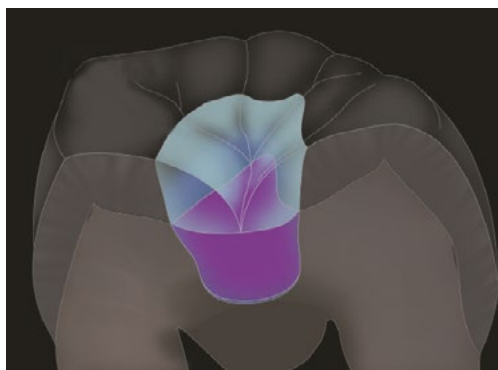
Simplified layering

Estelite Asteria introduces a new concept of simplified two-phase layering. This technique allows you to obtain a highly aesthetic result with only two masses, both in the anterior and posterior sectors.

The Body masses replicate the chroma and the shade, while the Enamel masses allow you to reproduce the value.



Class IV Post-op result



Class I



Post-op result

Clinical cases courtesy of Dr. Noboru Takahashi

REATTACHMENT OF THE FRAGMENT IN A YOUNG PATIENT



Clinical images courtesy of Prof. S. Grandini and Dr. G. Pavolucci (University of Siena)

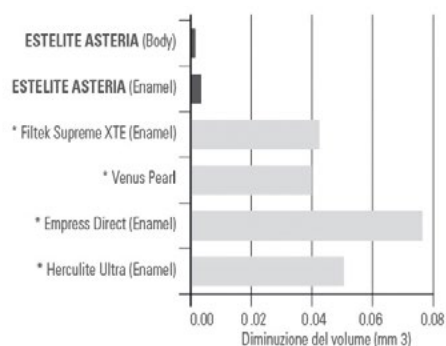
Sol-Gel technology



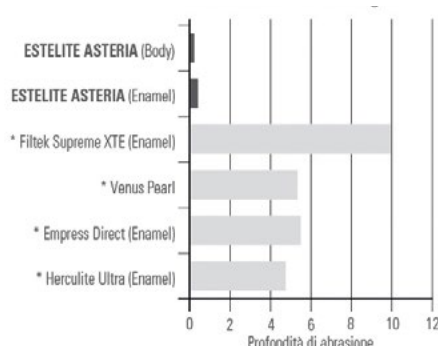
The method, patented by Tokuyama for its Supra Nano Spherical filler, allows to control the size of the filler particles by acting on the reaction times and to modulate the refractive index of the filler, modifying the type and granulometry of the additive. The result? Pleasant workability, perfect color matching, simple and effective polishability for satisfied patients over time!

Supra Nano Spherical filler particles at 50,000 magnification

Wear



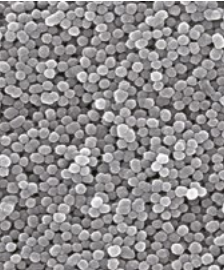
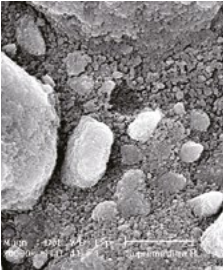
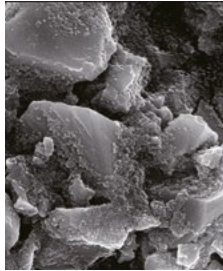
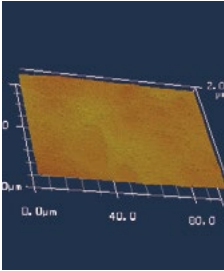
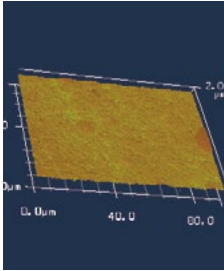
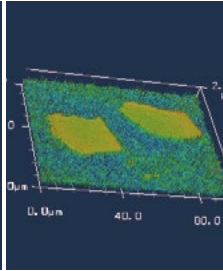
Abrasion of the antagonist tooth



*Not a registered trademark of Tokuyama Dental
Source: Tokuyama Dental R&D

Easy-to-achieve, long-lasting shine

ESTELITE ASTERIA Supra-Nano spherical filler guarantees an extremely smooth, uniform and shiny surface that lasts over time.

| SPHERICAL FILLER | | | NON-SPHERICAL FILLER | | | GLOSS (AFTER 10,000 THERMAL CYCLES) | | |
|---|---|---|----------------------|--|--|--|---|---|
|  |  |  | | | |  |  |  |
| ESTELITE ASTERIA | *Filtek Supreme XTE | *Venus Pearl | | | | ESTELITE ASTERIA | *Filtek Supreme XTE | *Venus Pearl |

*Not a registered trademark of Tokuyama Dental - Source: Tokuyama Dental R&D

DIRECT AESTHETIC RESTORATION IN THE FRONTAL SECTOR



Clinical images courtesy of Dr. Leandro Pereira (Brazil)

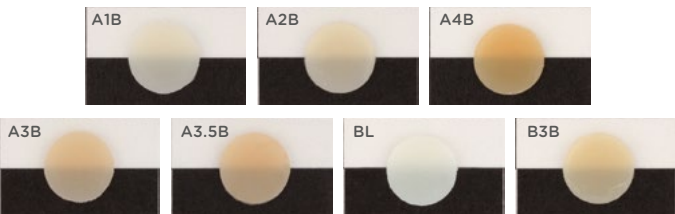
Invisible margins

7 Body (Dentin) shades and 5 Enamel shades cover the entire range of colors and shades of the natural tooth. To obtain an invisible margin, it is covered with Body masses (with the exception of the incisal area) which, thanks to their advanced optical properties, ensure excellent camouflage even with narrow margins. Enamel masses have such a translucency that it is possible to obtain effects similar to natural enamel.

| BODY SHADE | ENAMEL SHADE |
|---|--|
|  |  |

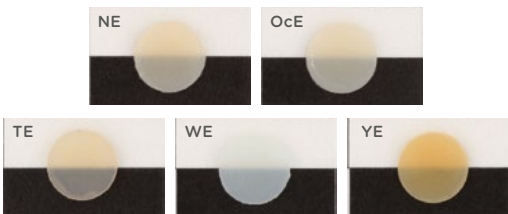
Clinical case courtesy of Dr. Noboru Takahashi

The body shades perfectly adapt to your preparation margin. They are able to ensure a balanced opacity, without having to resort to the use of opaque colors or dentines. The colors A1B-A4B harmonize with most natural dentitions. The additional colors BL and B3B are indicated for very white teeth (BL) and yellowish B-shade teeth (B3B), respectively.



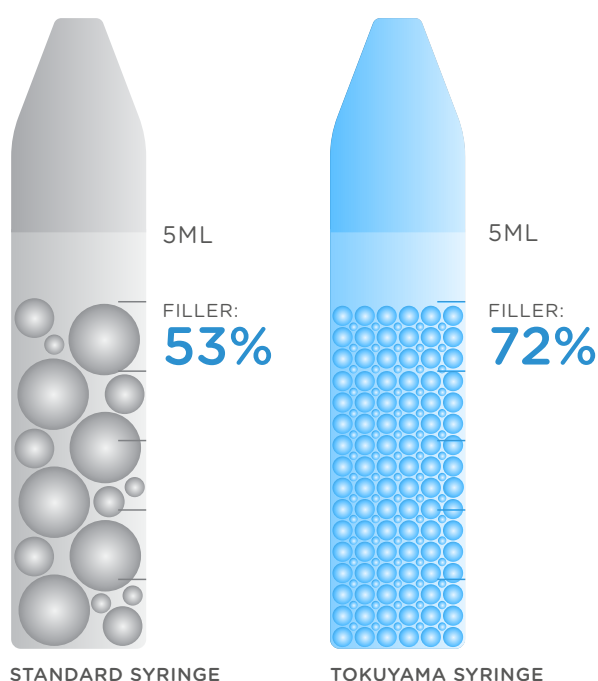
Clinical case courtesy of Dr. Noboru Takahashi

Enamel shades have a translucency comparable to that of natural tooth enamel. The NE mass finds its main use in the anterior sectors, while OcE is particularly suitable for the occlusal area of posterior teeth. TE is dedicated to particularly translucent anterior teeth, WE for whitish enamel and YE for depigmented orange enamel.

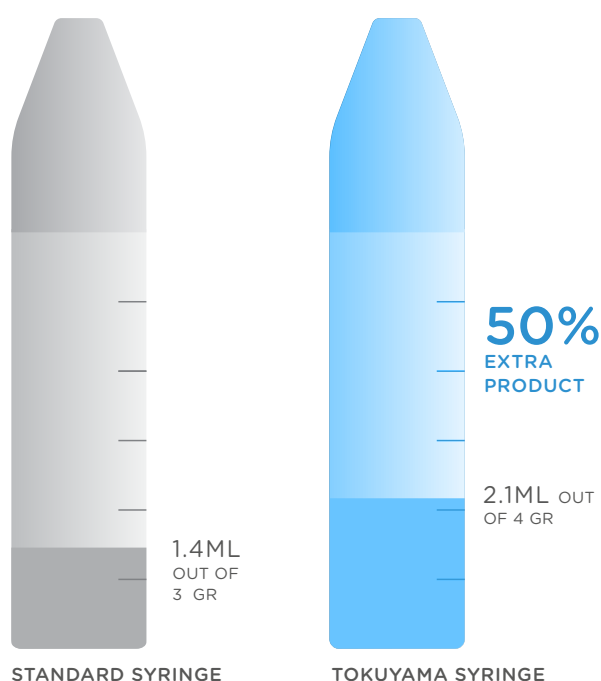


Performance

Did you know that it is more important to measure the amount of filler by volume rather than by weight?



How do you measure the actual amount of product you purchase? The correct unit of measurement is ml.



Tips and tricks

- If the surface translucency is high, a thin layer of **NE** applied over the Body layer may be necessary. It is important that the Body mass covers the entire margin of the natural enamel in the first applied layer to best mask the edge of the preparation.
- **NE (Neutral Enamel)** is recommended in most cases to restore the degree of translucency in the incisal area. If you want to lower the value or desaturate the chroma, you can use **OcE (Occlusal Enamel)**. The Enamel must be applied in thin layers and mainly on the incisal edge (under 0,5 mm).
- **WE (White Enamel)** is recommended for the re-

construction of interproximal walls. **WE** is recommended as an alternative to **NE** in light shades. **TE (Transparent Enamel)** is the most translucent mass in the Asteria system. It is indicated as an intermediate layer between the body and the enamel to enhance incisal translucencies.

- **YE (Yellow Enamel)** designed to replicate enamel discolorations, while **OcE** occlusal enamel is designed for reconstructions on diastoric teeth, with sculptability specifically designed for cusps and grooves. Furthermore, OcE has an excellent intermediate value between NE and WE.