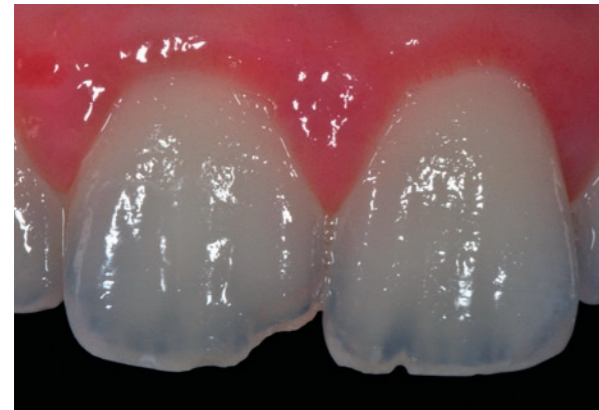


Workflows in aesthetic restoration

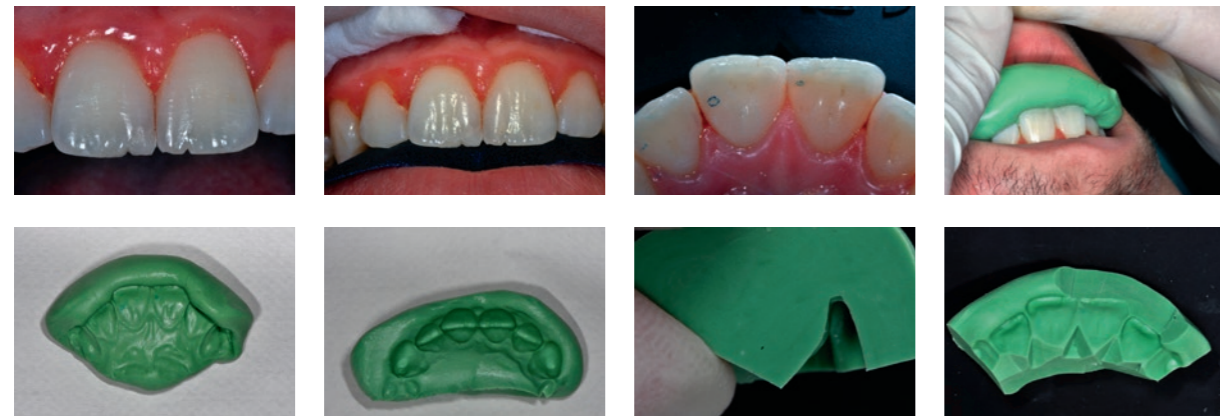
PROF. SIMONE GRANDINI DDS MSc PhD
 Chair of Endodontics and Restorative Dentistry
 Head of Department of Endodontics and Restorative Dentistry
 Dean of the School of Dental Hygienists
 University of Siena - Italy



Aesthetic restorations are challenging in many ways as both function and aesthetic are of primary importance. This young patient presented in the University Department with a class IV fracture after a sport accident, and he requested to have an immediate restoration.

In order to build a silicon key, a pre-restoration (using no Dentin Bonding Agent) was placed. An additional silicon key was created to check the thickness during the layering, so that a correct amount of dentin and enamel could be layered. This would facilitate the correct integration with natural dentition from the chromatic point of view.

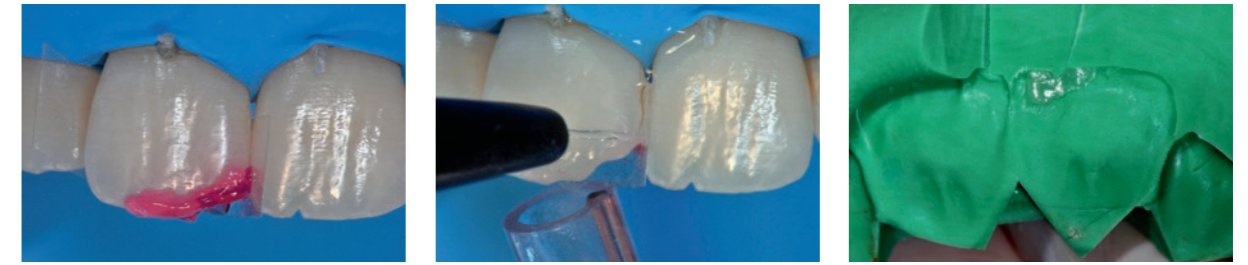
Careful attention was given to the adhesive protocol steps, and to the correct layering of enamel and body masses. Here is the clinical case Gallery, with the step by step procedure.



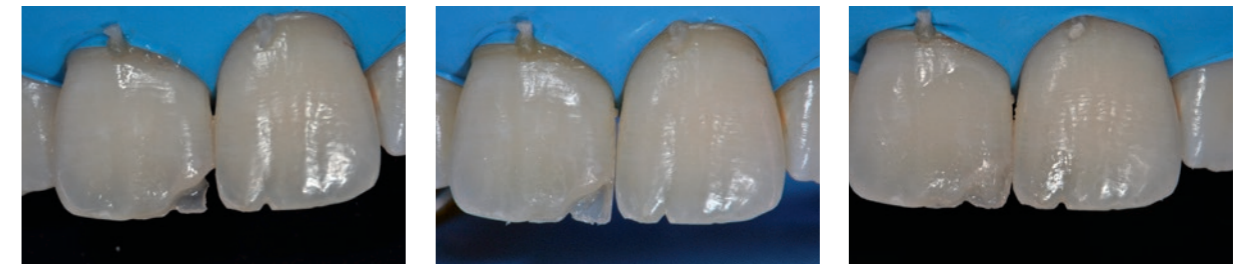
Analysis - study of the tooth from the functional, morphological and chromatic point of view - construction of the silicone key.



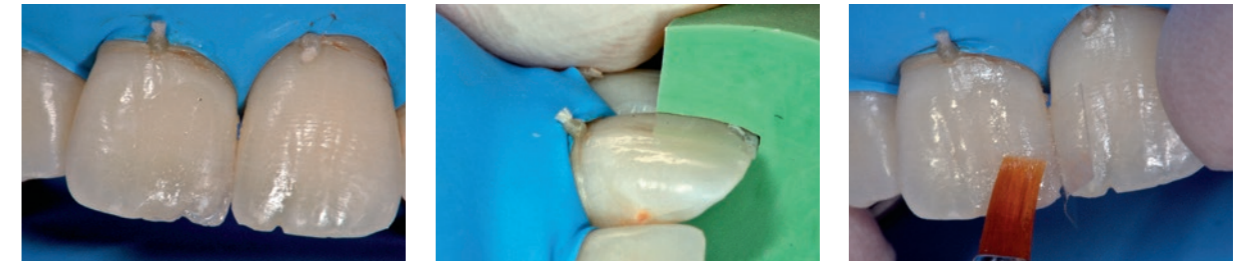
Isolation of the operating field - placing of the rubber dam - preparation / finishing of the margin.



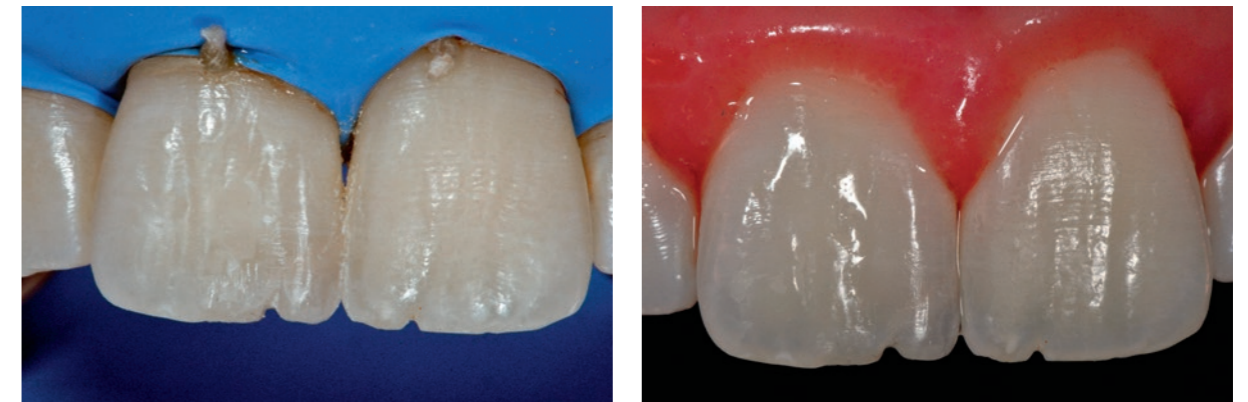
Selective etching - adhesive Protocol - use of the silicone key to build the palatal wall.



Integration of the palatal shell and its layering.



The body shades.



Micro and macro geography morphology with finishing adjustment - restoration after removal of the rubber dam.